

# TVD-LWB-S

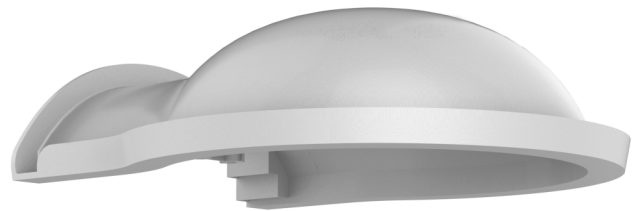
## TruVision water shield for TVD-LWB wall bracket

### Overview

---

TruVision camera mounts are part of a modular system that allows users to mount TruVision cameras in a variety of positions to meet the needs of each application. TruVision camera mounts are designed for use with fixed bullet, wedge and mini dome cameras and feature rugged construction suitable for indoor and outdoor environments.

The TVD-LWB-S provides the required protection to install the already available TVD-LWB-1/2 series outdoors.



### Details

---

- Suitable for the TruVision L-shaped wall bracket
- Water shield
- ABS plastic

# TVD-LWB-S

## TruVision water shield for TVD-LWB wall bracket

### Spécifications techniques

---

#### Généralités

Bracket type	Camera
Support type	TruVision bracket
Bracket mounting part	Mounting adapter
Mount type	Wall bracket
Cable management	Yes

#### Caractéristiques physiques

Physical dimensions	182 × 163 × 52 mm
Net weight	108 g
Colour	Grey (Pantone 428c)
Material	ABS plastic



As a company of innovation, Carrier Fire & Security reserves the right to change product specifications without notice. For the latest product specifications, visit [firesecurityproducts.com](https://firesecurityproducts.com) online or contact your sales representative.

Last updated on 5 May 2023 - 9:54